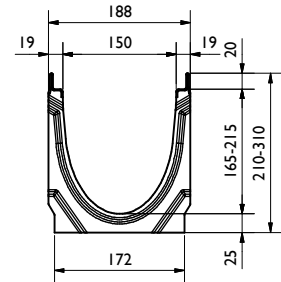
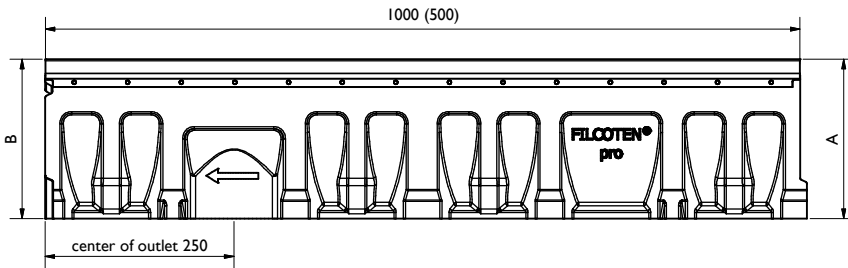


Rinnen/Channel:

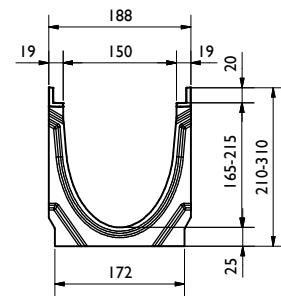
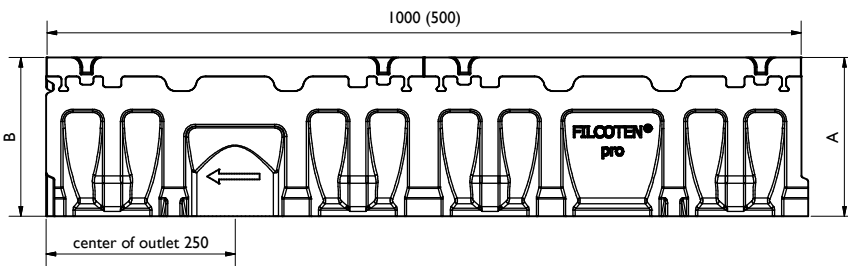
FCT pro NW150 V-E

BG code: siehe Tabelle/ see table:



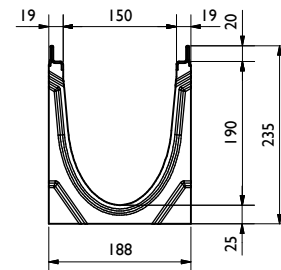
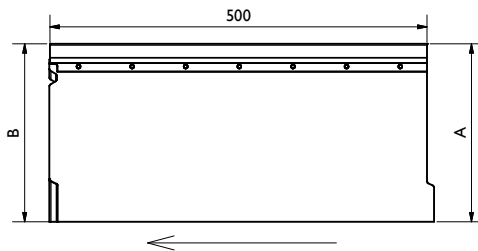
FCT pro NW150 G

BG code: siehe Tabelle/ see table:



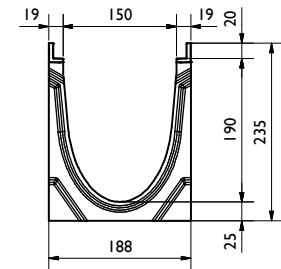
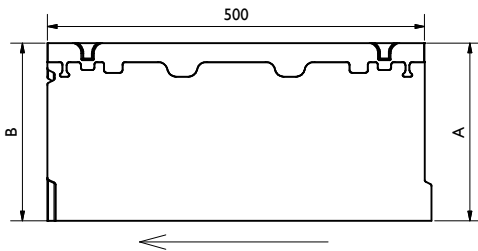
FCT pro NW150 V-E, Nr. 5-0 f. seitl. Bohrung/f. side outlet drilling

BG code: siehe Tabelle/ see table:



FCT pro NW150 G, Nr. 5-0 f. seitl. Bohrung/f. side outlet drilling

BG code: siehe Tabelle/ see table:

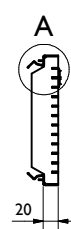
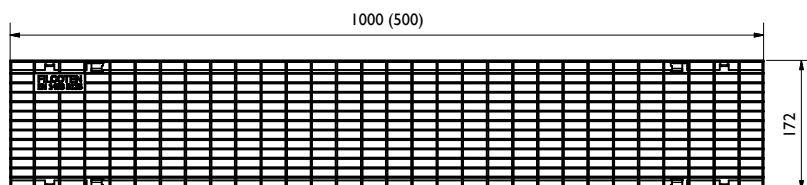


Rinne / channel - Maße / dimensions [mm]								
BG code G	BG code V	BG code E	Typ	Höhe A height A	Höhe B height B	Länge length	Gewicht weight G [kg]	Gewicht weight V/E [kg]
10615100	10615200	10615300	0	210	210	1000	31,8	30,8
10615180	10615280	10615380	0 (0,5m)	210	210	500	15,7	15,2
10615101	10615201	10615301	1	210	215	1000	32,5	31,5
10615102	10615202	10615302	2	215	220	1000	33,2	32,2
10615103	10615203	10615303	3	220	225	1000	33,9	32,9
10615104	10615204	10615304	4	225	230	1000	34,6	33,6
10615105	10615205	10615305	5	230	235	1000	35,3	34,3
10615161	10615261	10615361	5-0	235	235	1000	35,6	34,6
10615181	10615281	10615381	5-0 (0,5m)	235	235	500	21,2	20,7
10615106	10615206	10615306	6	235	240	1000	35,9	34,9
10615107	10615207	10615307	7	240	245	1000	36,6	35,6
10615108	10615208	10615308	8	245	250	1000	37,2	36,2
10615109	10615209	10615309	9	250	255	1000	37,9	36,9
10615110	10615210	10615310	10	255	260	1000	38,5	37,5
10615162	10615262	10615362	10-0	260	260	1000	38,8	37,8
10615164	10615264	10615364	20-0	310	310	1000	48,7	47,7

Legende / explanation:	
FCT:	FILCOTEN HPC
V:	verzinkter Stahl / galvanized steel
E:	Edelstahl / stainless steel
G:	Gußeisen / ductile iron
H:	Holz / wood

Roste, Abdeckungen / grates, covers:

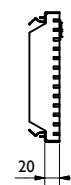
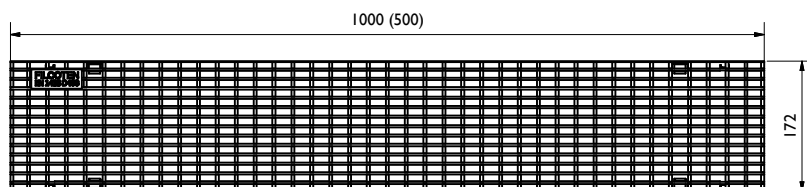
Gitterrost / Mesh grating: MW30/10, C250  
BG code: V 17015222 (17015223), E 17015322 (17015323); 6,9 kg (3,6 kg):



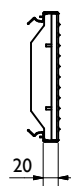
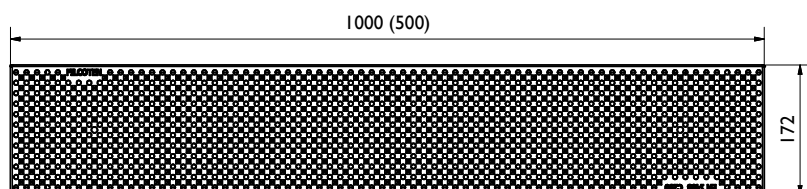
A (1 : 2)



Gitterrost / Mesh grating: MW25/10, D400  
BG code: V 17015226 (17015227), E 17015326 (17015327); 10,4 kg (5,3 kg):

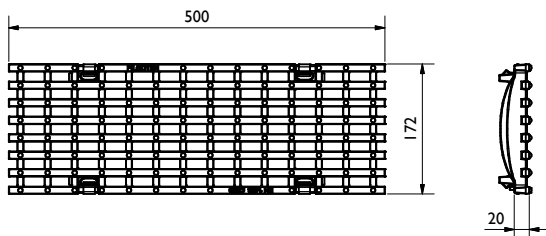


Lochrost / Perforated grating: dm: 6; C250  
BG code: V 17015228 (17015229), E 17015328 (17015329); 7 kg (3,5 kg):

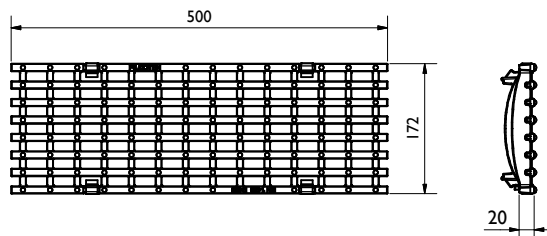


Roste, Abdeckungen / grates, covers:

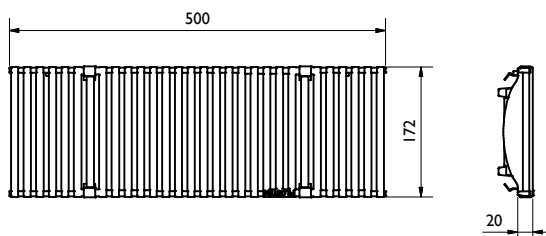
Gußrost / Ductil iron grating: MW29/13, C250  
BG code: GJS 17015101; 4,9 kg:



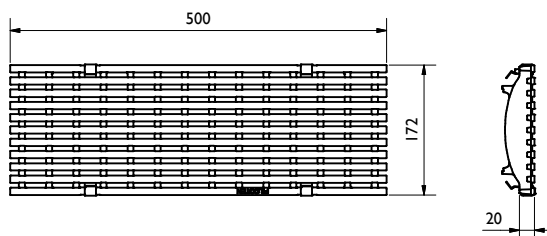
Gußrost / Ductile iron grating: MW29/13, D400  
BG code: GJS 17015104; 5,2 kg:



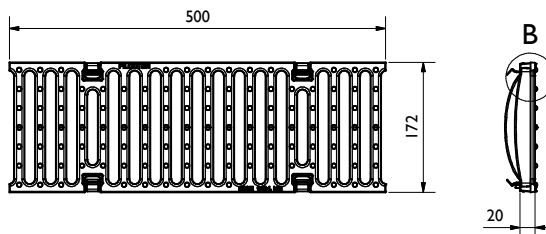
Guß-Designrost / Ductile iron design grating: KIARO, D400  
BG code: GJS 17015183; 6 kg:



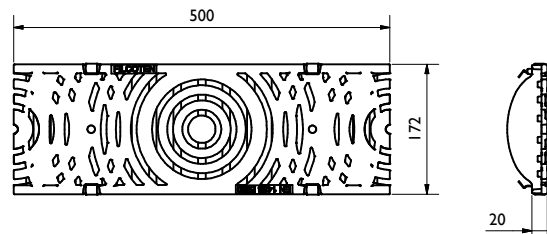
Guß-Designrost / Ductile iron design grating: VIA, D400  
BG code: GJS 17015184; 5,6 kg:



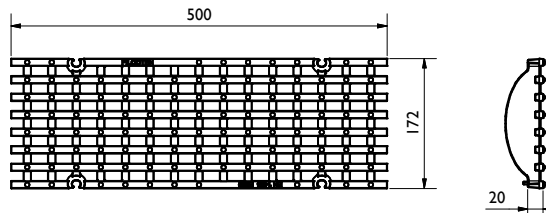
Guß-Stegrost / Ductile iron slotted grating: SW14/150, E600  
BG code: GJS 17015105; 7 kg:



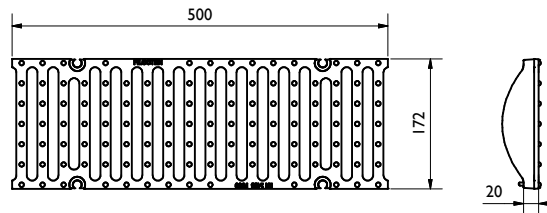
Guß-Designrost / Ductile iron design grating: VILLE, E600  
BG code: GJS 17015180; 8,6 kg:



Gußrost / Ductile iron grating: MW22/13, E600  
BG code: GJS 17015103; 7,2 kg:  
4-fach verschraubbar/4-times bolted

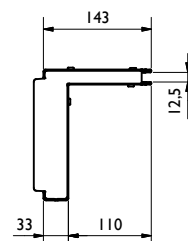
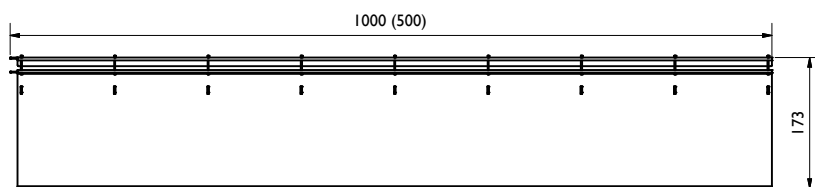


Gußrost / Ductile iron grating: SW14/150, F900  
BG code: GJS 17015107; 7,3 kg:  
4-fach verschraubbar/4-times bolted

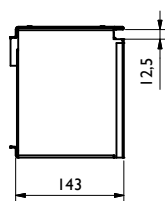
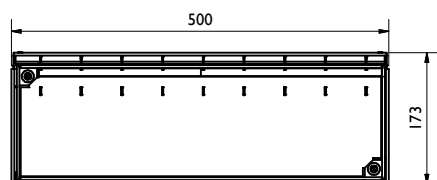


Schlitzaufsatz / slot top NW 150:

Schlitzaufsatz SW 12,5mm, SH 110, C250  
BG code: V 17115243 (17115244), E 17115343 (17115344); 6,7 kg (3,3 kg):

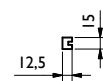
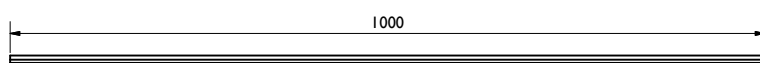


Revisionschacht SW 12,5mm, SH 110, C250  
BG code: V 17115281, E 17115381; 5,9 kg:



Zubehör / accessory:

Bauzeitabdeckung / construction time barrier  
BG code: H 37962; 0,1 kg:

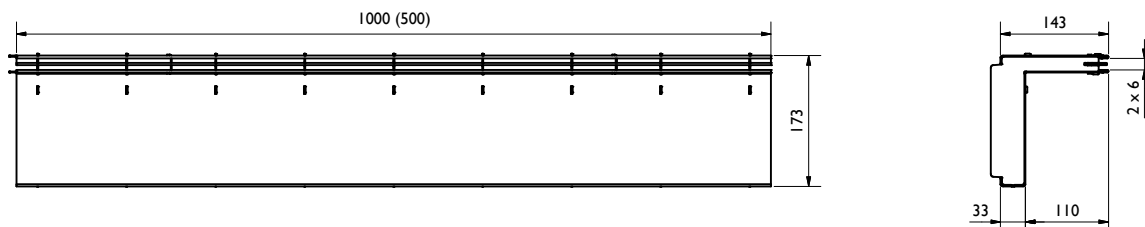


Abhebegriff / opening tool  
BG code: V 13399; 0,1 kg:

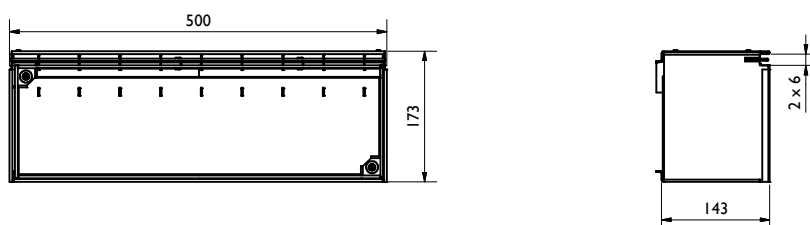


Design-Schlitzaufsatz / decorative-slot top NW 150:

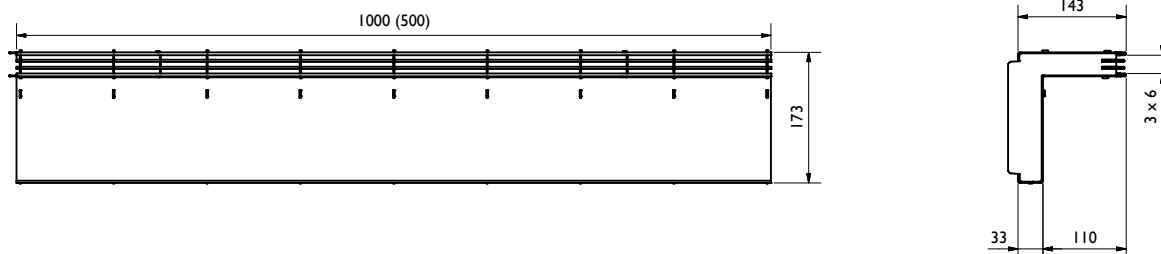
Schlitzaufsatz 2S / slot top 2S, Heelproof, SW 2x6mm, SH 110, C250  
BG code: V 17116204 (17116205), E 17116304 (17116305); 7,2 kg (3,6 kg):



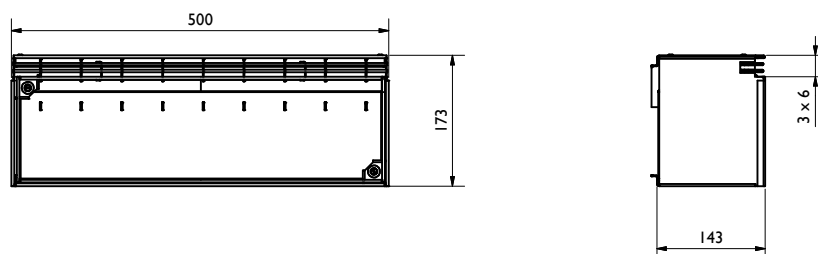
Revisionschacht 2S / revision shaft 2S, Heelproof, SW 2x6mm, SH 110, C250  
BG code: V 17116206, E 17116306; 6,8 kg:



Schlitzaufsatz 3S / slot top 3S, Heelproof, SW 3x6mm, SH 110, C250  
BG code: E 17116307 (17116308); 7,9 kg (4 kg):



Revisionschacht 3S / revision shaft 3S, Heelproof, SW 3x6mm, SH 110, C250  
BG code: E 17116309; 6,8 kg:

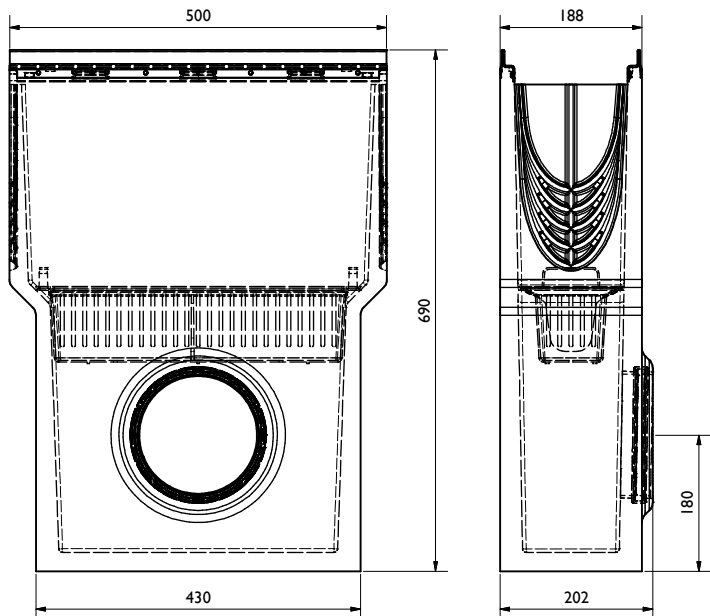


Abdeckband weiß / cover tape white  
BG code: 37963

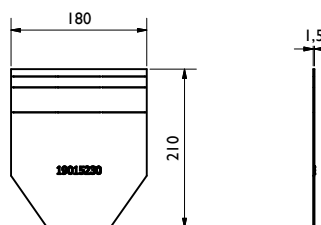
50mm Breite / width  
33m Länge pro Rolle / length per roll

Zubehör / accessories:

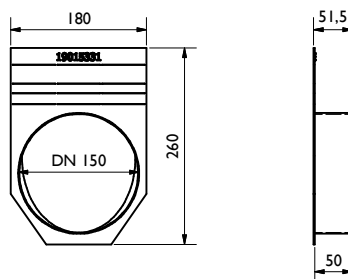
Sinkkasten / Sump unit:  
inkl. Schlammemeier / incl. silt bucket (22516; 0,3 kg)  
BG code: V 10615292, E 10615392; 44,8 kg:



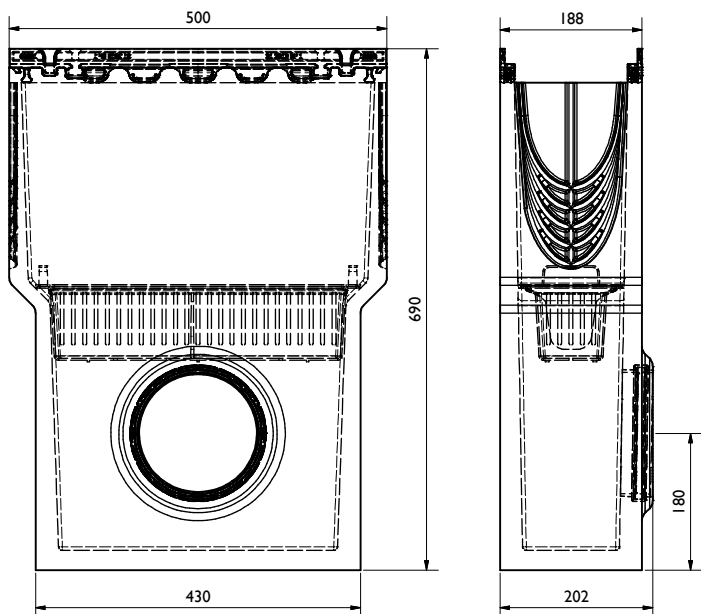
Stirn-/ Endplatte / End cap:  
BG code: V 19015230, E 19015330; 0,5 kg:



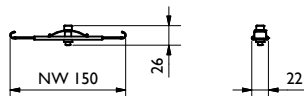
Stirn-/ Endplatte / End cap:  
BG code: V 19015231, E 19015331; 0,6 kg:



Sinkkasten / Sump unit:  
inkl. Schlammemeier / incl. silt bucket (22516; 0,3 kg)  
BG code: G 10615192; 45,3 kg:



Vandalismus Verriegelung / Anti-vandalism locking device  
BG code: E 32088; 0,1 kg:



Verschraubungsmaterial / Bolting material:  
BG code: V 32103; BG code: E 32109:

